



WK610

Unisex fleece bodywarmer with sherpa inner

- Warm, soft and comfortable inner.
- Versatile and functional garment, a workwear essential.
- Easy to decorate.

100% polyester. Bonded microfleece and sherpa fabric. Straight fit. 2 front zipped pockets with piping and zip puller. 1 zipped rounded chest pocket with zip puller on the right when worn, with matching double over stitching. Zip fastening with zip puller. Sherpa lining and hanging loop inside the neck. Cover stitch on armholes and bottom hem. Detachable brand label.



XS - S - M - L - XL - XXL - 3XL - 4XL - 5XL



500 g/m²



More information

Logistic



1



15

Country of origin



BD - Bangladesh

Customs code



61103099



Black



Chocolate



Navy

Washing instructions

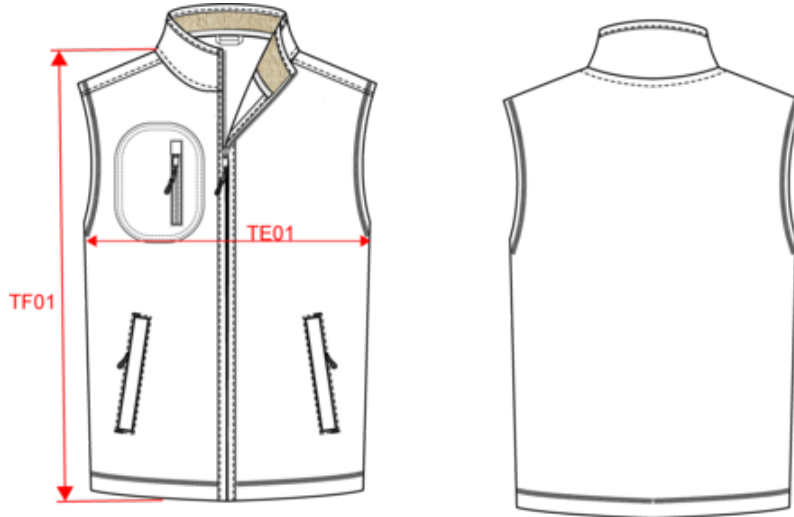




WK610

Unisex fleece bodywarmer with sherpa inner

Dimensions (cm)



Measurements in cm	XS	S	M	L	XL	XXL	3XL	4XL	5XL
TE01 - 1/2 chest width at 1.5cm below armhole	51.00	54.00	57.00	60.00	63.00	66.00	69.00	72.00	75.00
TF01 - Total height from HSP	68.00	70.00	72.00	74.00	76.00	78.00	80.00	82.00	84.00



WK610

Unisex fleece bodywarmer with sherpa inner

Colours information



Black
RVB : 35,35,37
Pantone C : Black
Pantone TCX : 19-4004TCX



Chocolate
RVB : 63,52,49
Pantone C : 412C
Pantone TCX : 19-0910TCX



Navy
RVB : 41,46,56
Pantone C : 433C
Pantone TCX : 19-4012TCX

Logistic



1



15

Sizes	Width (cm)	Height (cm)	Length (cm)	Net weight (kg)	Gross weight (kg)	Pieces/Box	Pieces/Bundle
XS	40.00	0.00	60.00	0.00000	0.00000	15	1
S	40.00	0.00	60.00	0.00000	0.00000	15	1
M	40.00	0.00	60.00	0.00000	0.00000	15	1
L	40.00	0.00	60.00	0.00000	0.00000	15	1
XL	40.00	0.00	60.00	0.00000	0.00000	15	1
XXL	40.00	0.00	60.00	0.00000	0.00000	15	1
3XL	40.00	0.00	60.00	0.00000	0.00000	15	1
4XL	40.00	0.00	60.00	0.00000	0.00000	15	1
5XL	40.00	0.00	60.00	0.00000	0.00000	15	1